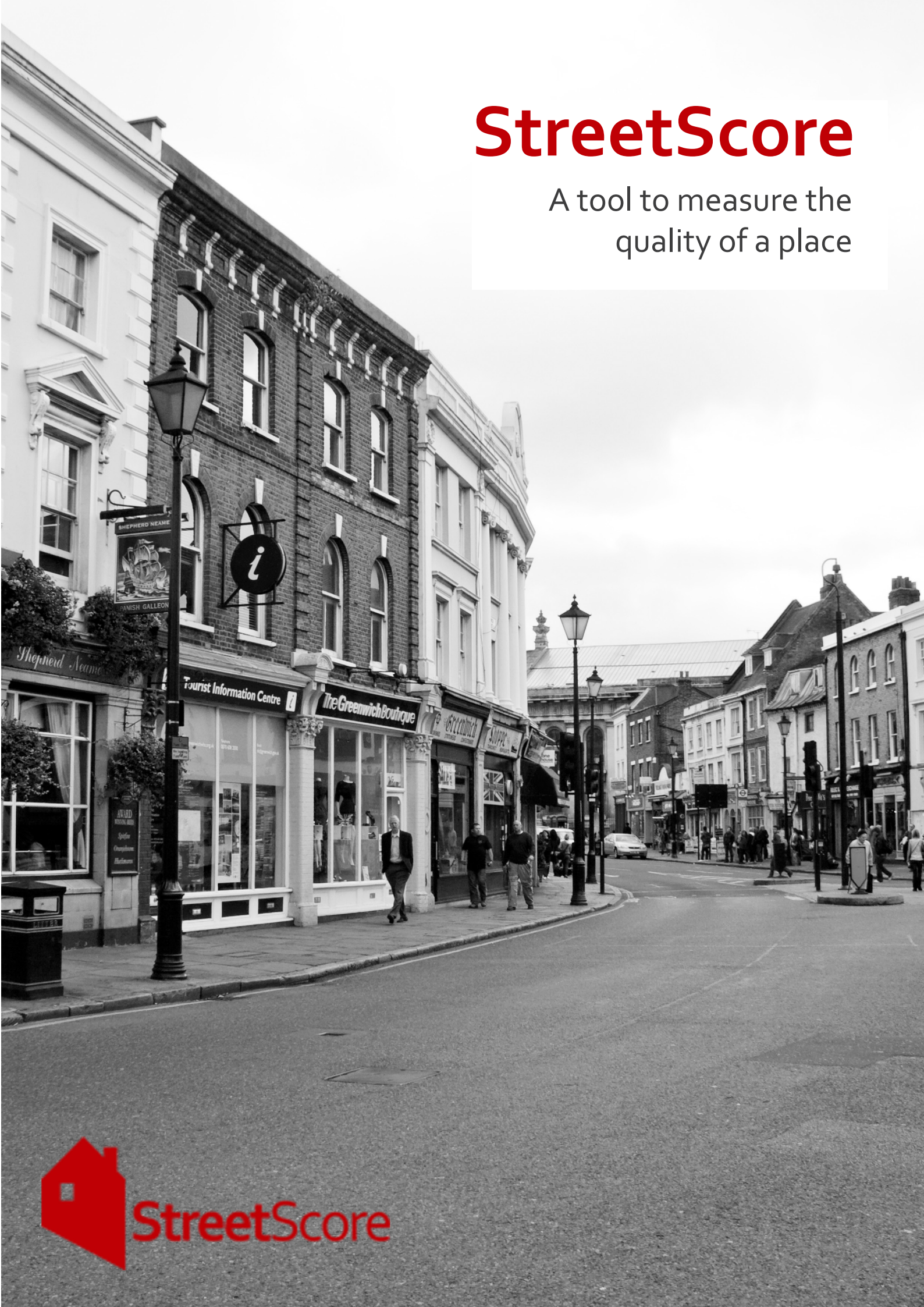


# StreetScore

A tool to measure the  
quality of a place



StreetScore

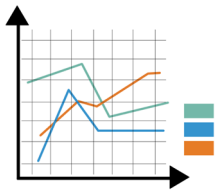
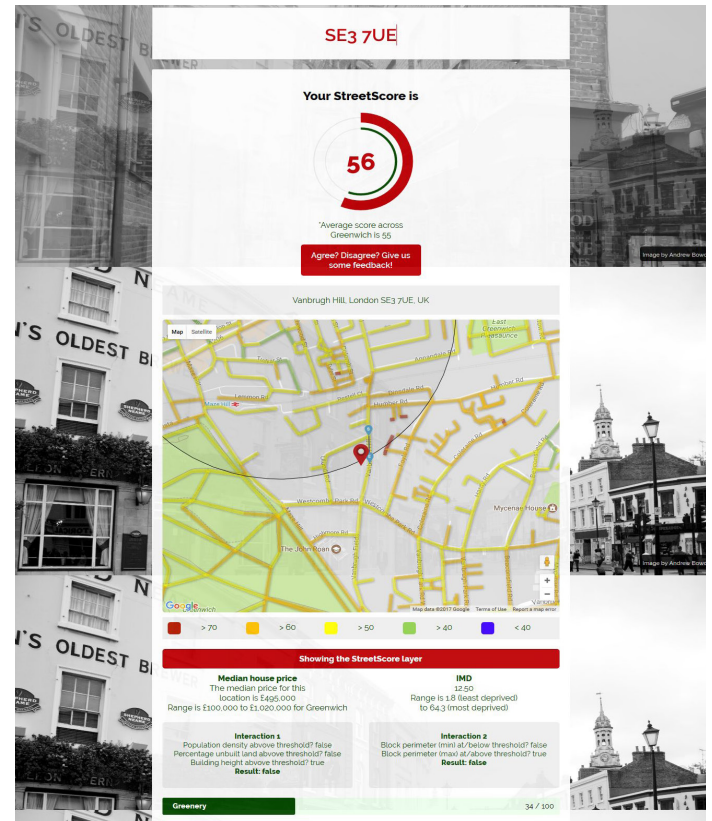


# What is StreetScore?



## Open Data

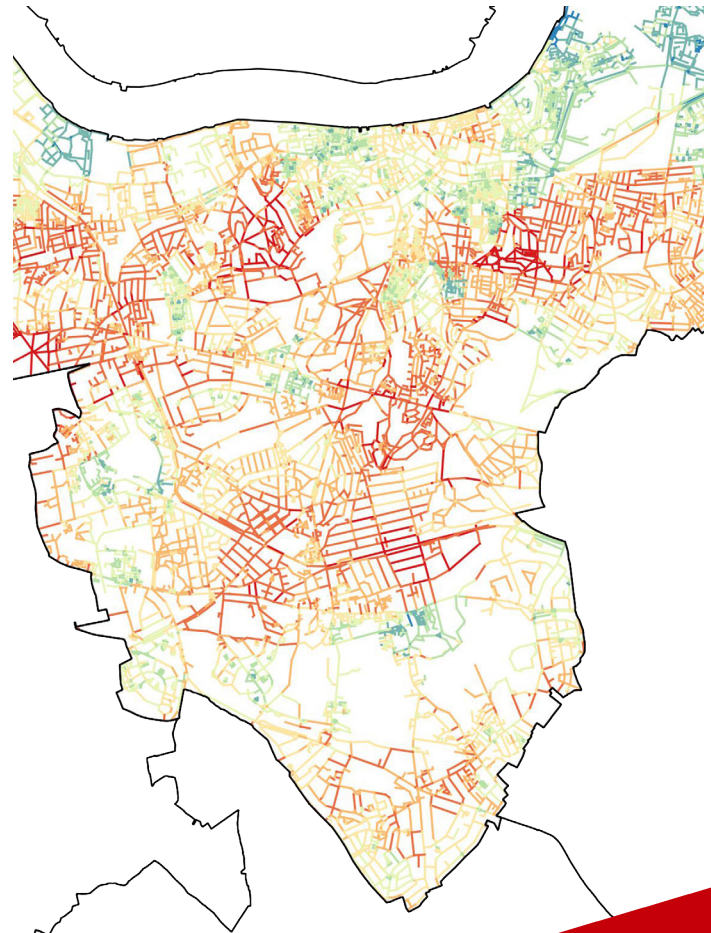
StreetScore uses Open Data to objectively and consistently describe the physical characteristics. It is a way of proving a consistent measure of the quality of a place based on multiple urban form, connectivity, heritage, and other data-points.



## What can StreetScore do?

There is no generally accepted measure of the quality of place. It is often argued that quality at the local scale is subjective, and that city level factors are more influential on socio-economic outcomes. However, peer-reviewed research is increasingly finding the relationships at both the city and local scales are important, as well as the interaction between them. And it is now possible to precisely explain:

- popular places,
- valuable places,
- places linked with good mental and physical health.



# What is StreetScore for?

StreetScore adds crucial value to the decision-making process by identifying places where there are issues not currently revealed by existing information.



Crucially StreetScore is able to:

- isolate individual characteristics of the urban environment,
- not lose sight of the vast range of elements that define quality,
- make link to sales value and metrics of wellbeing and satisfaction.



*StreetScore can be used both to identify and to predict.*

*Insights can be on a street-by-street- level, at ward level or borough-wide.*



StreetScore helps to:

- **IDENTIFY HIGH AND LOW PERFORMING STREETS**  
Including comparisons with 'similar' areas and streets in the borough or ward
- **ACCESS POTENTIAL IMPACT OF PROPOSED INTERVENTIONS**  
From small-scale tactical acts (planting trees) to higher-level strategic projects
- **PRIORITISE AREAS IN NEED**  
Where a relatively small change could have a disproportionately large impact
- **FOCUS**  
Improvements efforts in the right places with the right priorities
- **INFORM**  
Is current policy focused on the right places or the right problems?
- **IDENTIFY PLACES OR STREETS**  
That are currently overlooked or under-served by existing policies

# What places have high StreetScore?



StreetScore evaluates places by accessing our database, which contains data on *multiple features of the urban environment* and generates a *weighted score*.



This careful weighting is informed by both the background of wider academic research and our own analysis of correlations between *features of urban form* and *socio-economic and health outcomes*.

- *Greenery*

High scoring streets tend to have frequent green spaces inter-woven in the city

- *Space*

Open space in the best streets is well over-looked, well maintained green spaces

- *Connectivity and Streets*

Streets that 'plug into' the surrounding city score well

- *Height*

Most buildings in high scoring streets will be at human scale height

- *Land use*

High scoring streets have mixed use of residential, commercial and retail

- *Density*

Best streets have sufficient density to be walkable but not to be overwhelming

- *Blocks*

Blocks should be neither too big nor too long

- *Facades and Design*

Beauty really matters. People like being in the best streets

- *Homes*

High scoring streets will tend to have densities that are high, but not too high

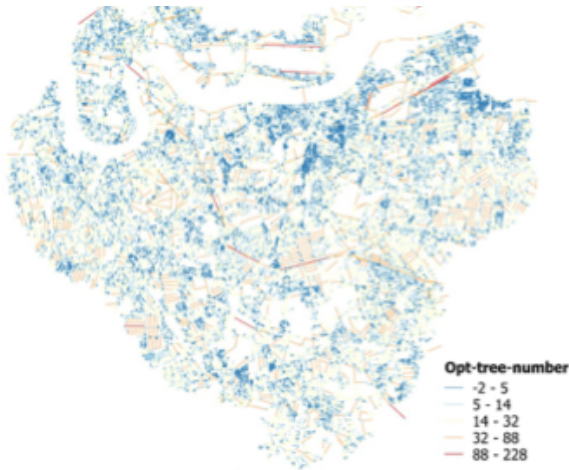
- *Air quality*

The best streets will have cleaner air

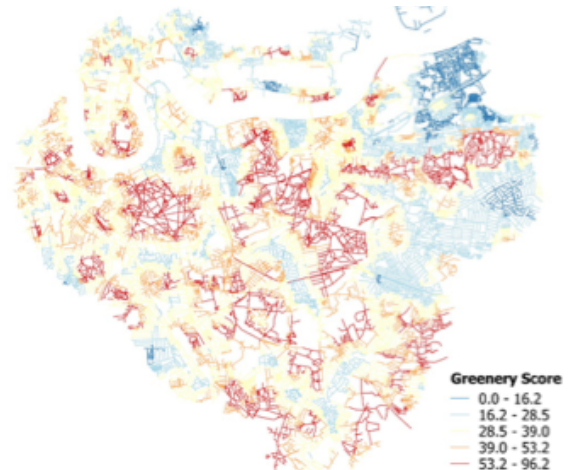


# How can you use StreetScore?

We were recently commissioned to evaluate a tree-planting programme in Greenwich to understand how location of trees planted impacted both Greenery Score and overall StreetScore of each street affected.



*Optimal tree number per street segment*

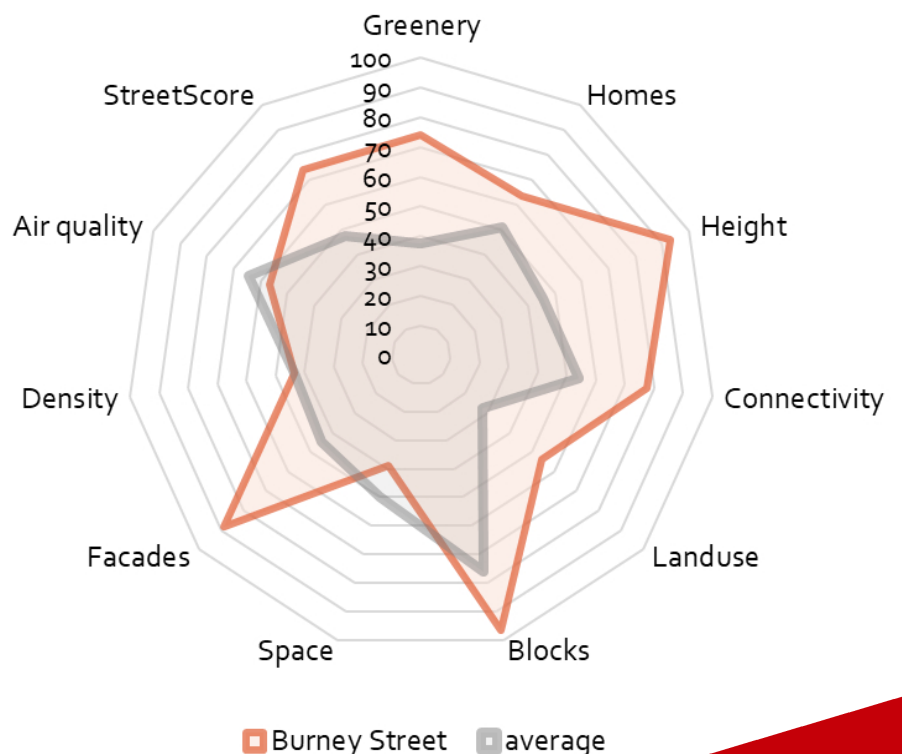


*Greenery score per street segment*

Other applications we are discussing with landowners and city councils include: **where investment** in town centres **would be more relevant** and whether **increasing the height and density of a street** would improve the street.



## Burney Street (StreetScore = 74.3)





0203 0260698

[contact@createstreets.com](mailto:contact@createstreets.com)

[www.createstreets.com](http://www.createstreets.com)

# Space Syntax

020 74001320

[london@spacesyntax.com](mailto:london@spacesyntax.com)

[www.spacesyntax.com](http://www.spacesyntax.com)